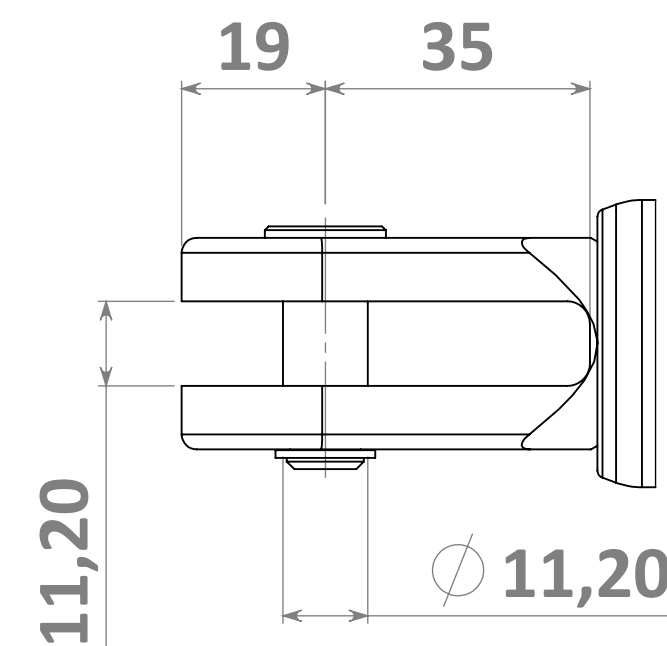
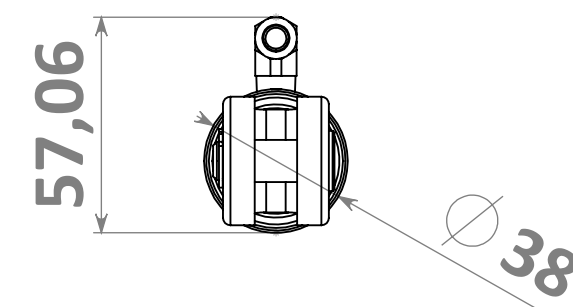
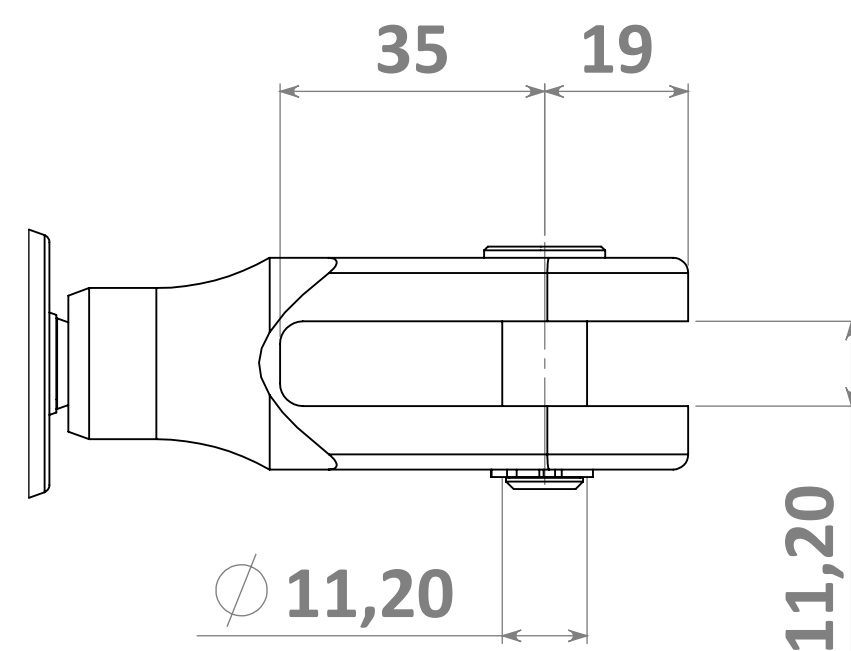


BACK

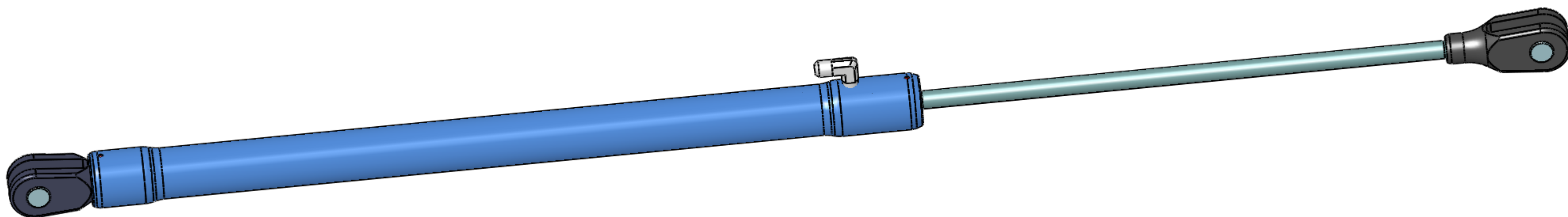
ROD



BACK
SCALE 1 : 1



ROD
SCALE 1 : 1



Function	Single acting cylinder - gas spring	
Bore	25	mm
Stroke	350	mm
Pull load @ 350 bar (max pressure)	1299	kg
Pull load @ 250 bar	928	kg
Pull load @ 200 bar	742	kg
Approx. dry weight	1,2	kg
Max oil volume	0.13	l

REV.	DATA / DATE	DESCRIZIONE / DESCRIPTION	NOME / NAME
RIFERIMENTO / REFERENCE	TABLE	SIZE	
TRAT. TERMICO / HEAT TREAT.	TRAT. SUPERFICIALE / FINISH		
CONTROLLATO / CHECKED	DATA / DATE	MATERIALE / MATERIAL	
APPROVATO / APPROVED	DATA / DATE	SCALA / SCALE	PESO / WEIGHT kg
DISEGNO N. / DRAWING	REV.		
DESCRIZIONE / DESCRIPTION			
CL 25 SINGLE ACTING STROKE 350			

CARIBONI S.r.l.
Via Mattei 3/A
20885 Ronco Briantino
e-mail: info@cariboni-italy.it
www.cariboni-italy.com

Tel +39 039 6079609
fax +39 039 6079128

ATTENTION! THIS DOCUMENT AND THE INFORMATION IT CONTAINS SHALL NOT BE REPRODUCED NOR DISCLOSED TO ANYBODY, BECAUSE PROPERTY OF CARIBONI S.r.l.